

Lesson-1

Nutrition in Plants

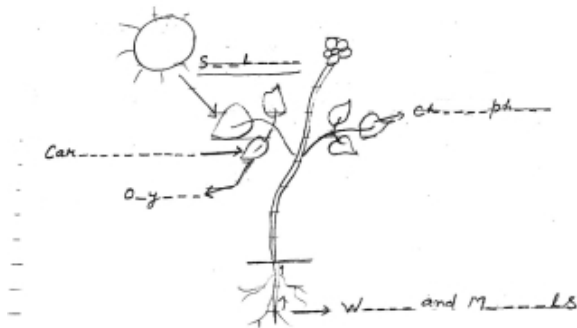
Q.1 Match the following:-

Column I

Column II

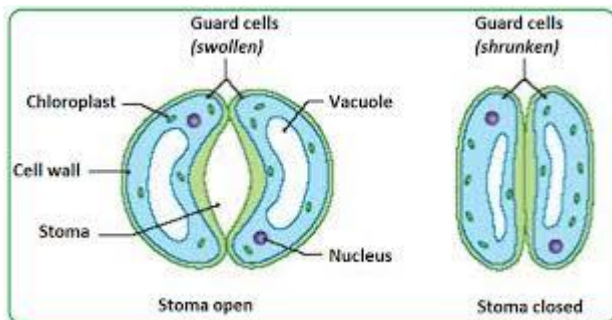
- | | |
|----------------------|---------------------------|
| a) Plants | i) Saprotrophs |
| b) Animals | ii) Autotrophs |
| c) Pitcher Plant | iii) Heterotrophs |
| d) Fungi | iv) Insectivorous Plant |
| e) Lichens | v) Symbiotic relationship |
| f) Cuscuta (Amarbel) | vi) Parasitic Plants |

Q.2 Neatly label the following diagram.

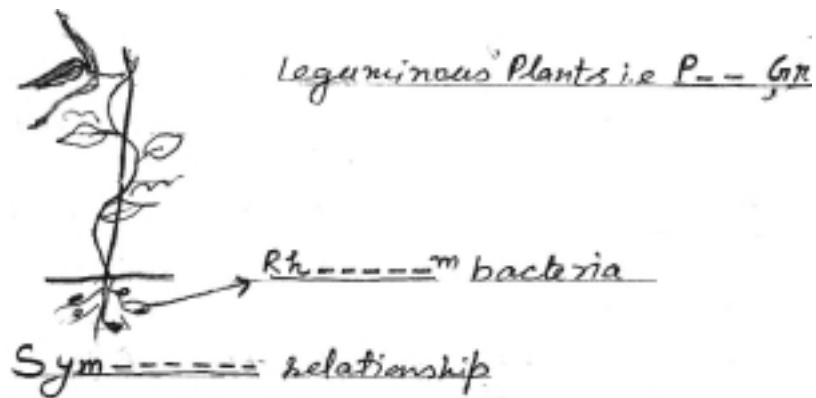


photosynthesis

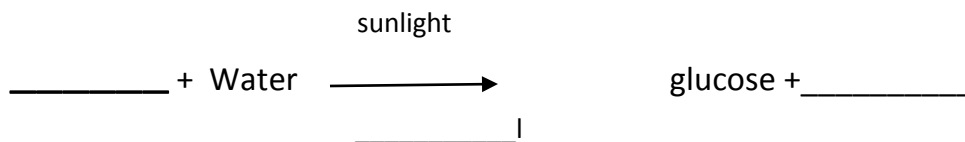
Q.3 Redraw the following diagram



Q.4 Fill in the blanks



Q.5 Complete the following equation representing photosynthesis.



Q.6 Nitrogen is an essential nutrient for plant growth. But farmers who cultivate pulse crops like green gram, Bengal gram etc do not apply nitrogenous fertilizers during cultivation, why?